



# PLAN JEFFCO UPDATE

AUGUST 2018

INSIDE THIS ISSUE	
In Plein Sight	1
In Plein Sight Calendar	2
Volunteer Schedule	3
The Artists - bios and ezamples	4
Visionary Women	10
Backdrop Closing	12
OSAC Notes	13



Is getting close and  
You are Invited

---

25 Plein Air painting artists will be painting from dawn to dusk beginning **September 10**.

**Monday, September 10** - Lair o' the Bear Park, 22550 Hwy 74

**Tuesday, September 11** - Artists are on their own

**Wednesday, September 12** - Alderfer/Three Sisters Park, 5136 South Le Masters Road

**Thursday, September 13** - Elk Meadow Park, 2855 Bergen Peak Drive

**Friday, September 14** - Centennial Cone Park, 3956 Camino Perdido

**Saturday, September 15** - Clear Creek Trail from the Washington Street Bridge west into the canyon

Come view and purchase the finished plein air paintings in the Coal Creek Room on the Second Floor of the Golden Community Center, 1070 10th Street, on

**September 12 and 13** from 2 p.m. to 8 p.m.

**September 14** from 2 p.m. to 6 p.m.

**September 15** from 10 a.m. to 8 p.m.

**September 16** from 10 a.m. to 4 p.m.

## *In Plein Sight Calendar*

**THE STAGING EVENT** - September 10 through September 15

**Come see the artists painting in our parks** - The 25 Plein Air artists that PLAN Jeffco chose, after a nationwide search, will be painting in our scenic Jeffco Open Space Parks and along the Clear Creek Trail from Washington Avenue into Clear Creek Canyon. The artists will be painting in the same parks from sunrise to sunset. Come and watch the artists as they work on their creations. Volunteers will be in the parks to assist the artists and to direct visitors to the areas where the artists are painting.

Monday, September 10, the artists will be in  
Lair o' the Bear Park,  
22550 State Highway 74, Idledale

Tuesday, September 11, the artists will be  
on their own as we set up the gallery

Wednesday, September 12, the artists will be at the  
West Trailhead of Alderfer/Three Sisters Park,  
5136 South Le Masters Road, Evergreen

Thursday, September 13, the artists will be at the  
Lewis Ridge Trailhead of Elk Meadow Park,  
2855 Bergen Peak Drive, Evergreen

Friday, October 7, the artists will be at the  
Ralph Schell Trailhead of Centennial Cone  
Park,  
3956 Camino Perdido, Golden

Saturday, October 8, the artists will be in  
Golden, along the Clear Creek trail from  
Washington Avenue into the canyon

**THE MAIN EVENT** - September 12 to  
September 16

**Come and buy fall scenes of our parks** - These days are for you and other art and open space lovers to have the opportunity to purchase the artists' works so you can bring the beauty of our

open space parks home with you.

The Gallery, in the Coal Creek Room, on the 2<sup>nd</sup> Floor, of the Golden Community Center, 1470 10<sup>th</sup> Street, will be open:

September 12 - 2:00 p.m to 8:00 p.m.

September 13 - 2:00 p.m to 8:00 p.m.

September 14 - 2:00 p.m to 6:00 p.m.  
center closes at 6:00 p.m.

September 15 - 10:00 a.m to 8:00 p.m.

September 16 - 10:00 a.m to 4:00 p.m.

Saturday, September 15, we will be having a reception  
from 5:30 p.m. until 8:00 p.m.  
featuring wine and Jeffco craft beers.

### **VOLUNTEERING**

Would you like to volunteer to help at the Staging or Main Events? The times and needs for volunteers are listed on the following page. At press time we do not have the registration details completed.

So email [contactus@planjeffco.org](mailto:contactus@planjeffco.org)

Give us the task, date, and time at which you would like to volunteer, and we will register you and send a confirming email.

## *In Plain Sight Calendar - continued*

### **Volunteer needs**

#### **In the parks**

September 10:  
Lair o' the Bear -           7:00 to 11:00  
  11:00 to 3:00  
  3:00 to 7:00

September 12,  
Alderfer/Three Sisters -   7:00 to 11:00  
  11:00 to 3:00  
  3:00 to 7:00

September 13,  
Elk Meadow                   7:00 to 11:00  
  11:00 to 3:00  
  3:00 to 7:00

September 14,  
Centennial Cone           7:00 to 11:00  
  11:00 to 3:00  
  3:00 to 6:00

September 15,  
Clear Creek                   7:00 to 11:00  
  11:00 to 3:00  
  3:00 to 5:00

September 16  
Lions Park                   11:00 to 3:00

#### **In the Gallery**

September 12               2:00 to 5:00  
  5:00 to 8:00

September 13               2:00 to 5:00  
  5:00 to 8:00

September 14               2:00 to 6:00

September 15               10:00 to 1:00  
  1:00 to 5:00  
  5:00 to 8:00

September 16               10:00 to 2:00  
  2:00 to 6:00

### **Volunteer tasks**

#### **In the Parks**

The 7:00 to 11:00 shift will help set up the PLAN Jeffco canopy, staff the canopy, answer questions, and assist the artists in locating spots to paint.

The 11:00 to 3:00 shift will staff the canopy, answer questions, assist getting lunches to the artists.

The 3:00 to 7:00 shift will staff the canopy, answer questions, take down the canopy, and bring the canopy to the Community Center.

Sunday, September 16 we will have a booth in Lion's Park during the Golden Giddyup. Volunteers will distribute brochures and answer questions.

#### **In the Gallery**

##### **Wednesday, Thursday and Friday**

The 2:00 to 5:00/6:00 and 5:00 to 8:00 shifts will log in the artists paintings, assist them hanging the paintings, handle sales, and answer questions.

##### **Saturday**

The 9:00 to 1:00 and 1:00 to 5:00 shifts will handle sales and answer questions.

The 5:00 to 8:00 shift will handle, sales, answer questions, and assist with the reception.

##### **Sunday**

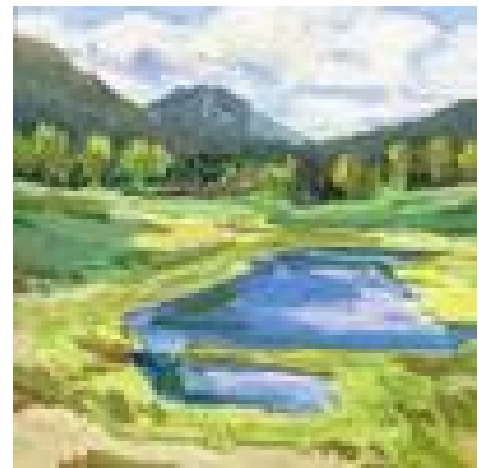
The 10:00 to 2:00 shift will handle sales and answer questions.

The 2:00 to 6:00 shift will handle sales until 4:00, then assist the artists in removing the paintings and dismantling the gallery.

**Cliff Austin** is a graduate of Denver Institute of Technology and the Rocky Mountain School of Art. An award-winning Colorado artist, Cliff has been painting and illustrating since 1980 and is affiliated with several Colorado art organizations. The core of Cliff's art is the relationship of light on shape using line and tone and color as it wraps and flows around the landscape, cityscape and figures. His work can be described as colorful, impressionistic and abstract. For more information, visit [www.cliffaustin.com](http://www.cliffaustin.com).



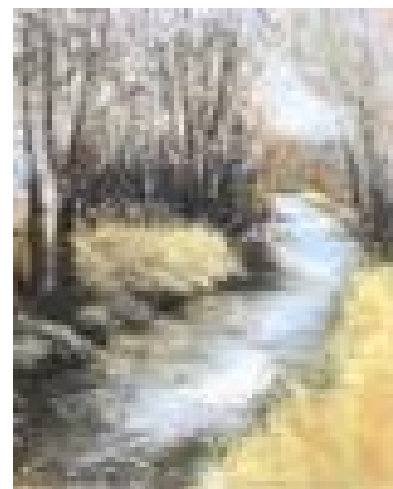
**Theresa Beck** has resided in Boulder, Colorado for the past 25 years, where she finds herself constantly drawn to be out in the mountains hiking and painting. She feels her paintings are a visual narrative; they tell a story as a field journal, that chronicle how she relates to the world. For more information, visit [www.theresambeck.com](http://www.theresambeck.com).



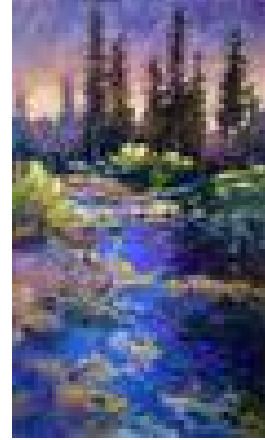
**Judith Brunko** began her art career in 1982, studying with figurative artists Kim English, Ramone Kelly and others at Rocky Mountain College of Art. Her art background led her into architecture, earning her Master of Architecture in 1990 from the University of Colorado. Judith is drawn to oil painting as a form to depict and portray thought, emotion and feeling. Judith has found that creating the structure of the human figure or the landscape on canvas has many similarities to designing and building architecture; both being visual expressions of physical beauty. You can see Judith's art at [www.studiojudithbrunko.com](http://www.studiojudithbrunko.com) and her architecture at [www.jpbarchitects.com](http://www.jpbarchitects.com).



**Dawn Buckingham** is a Colorado artist with a passion for capturing the landscape in all seasons. She began to pursue pastel painting after retirement from education and now exhibits her work in both local and juried national shows and plein air competitions. As a career educator, she also enjoys introducing others to the pastel medium through No Fear - Just a Play Day classes and leads weekly open studio sessions. For more information, visit [www.dawnbuckinghamfineart.com](http://www.dawnbuckinghamfineart.com).



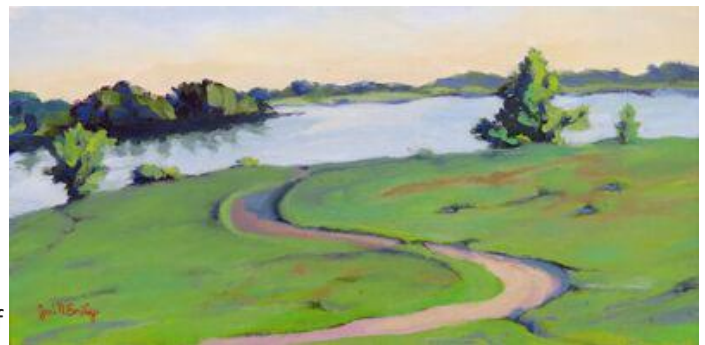
**Jane Christie** is a passionate pastel artist. Her paintings reflect her love of nature, light and color. She also wishes to help other artist succeed as they follow their creative path. She is a Signature member of PSA, PSC, PAAC and associate member of WAOW. For more information, visit [www.janechristieart.com](http://www.janechristieart.com).



Whether working “en plein air” or in her studio, a sublime connection with nature permeates **Patty Dwyer's** paintings, which have been described as expressive, joyful, textural, colorful and ebullient. A self-taught, life-long artist who works primarily in oils and soft pastels, Patty only recently began showing and selling her work, with her first solo show held in March 2015. As the founding member and chairperson of the Arts Committee at Cherokee Ranch & Castle in Sedalia, she is very involved in building long-term arts and programs at this historic castle and ranch. For more information, visit [www.pattydwyerartist.com](http://www.pattydwyerartist.com).



**Joni Emily:** It is the transient effects of a scene, the subject's intent, or the scene's deeper content that are the inspirations of Joni's contemporary oil paintings. Joni paints from life, using living models for portraits and figures and natural light for plein air artworks. Earning her BS degree from the University of Colorado, Joni has studied art at various universities. Joni's first art career was as a theatre set designer, designing and building stage scenery for dramas, musicals, comedies, and light operatic productions. A performer herself, Joni accesses her theatrical experiences when composing the stories of her paintings. For more information, visit [www.joniemily.com](http://www.joniemily.com).



Taking an art class in 2009 started **Judith Gilman** on her retirement journey through painting. It was a love affair as she studied about, thought about, talked about, and learned about art by doing. Starting with her first show in 2010, Judith has displayed her work in both open and juried shows, one woman shows, and at Judith Gilman Studio. Judith's oil and watercolor paintings interpret the beauty of scenic views through color and strong brush strokes, sometimes adhering to the reality of the scene and sometimes using it as a springboard to her imagination. For more information, visit [www.judithgilmanstudio-gpddesigns.com](http://www.judithgilmanstudio-gpddesigns.com).



**Shelley Howard:** Longtime artist and art educator, Shelley is an award winning painter and pastel artist who focuses on both studio and Plein Air landscapes. She has a BFA in painting and vocal music from Bowling Green State University in Ohio, and an MA in art education from the University of Northern Colorado. As an educator, Shelley was the Fine Arts Dept Chair at Overland High School, Cherry Creek District Fine Arts Chair and President of the Colorado Art Education Assoc. For more information, visit [www.artistshelleyhoward.com](http://www.artistshelleyhoward.com)



**Debbie Kerr** has an obsession for art and living in Colorado has led to a passion for painting landscapes and animals. She has always enjoyed exploring her surroundings for interesting subjects to paint, and the Colorado Rockies with their sweeping vistas, abundant wildlife, and ranches provide a wealth of inspiration.



**Kathleen Lanzoni** is an award-winning artist with a passion for watercolor painting. Painting in the studio as well as Plein Air, Kathleen immerses herself in the fluidity and unpredictable qualities of watercolor paint. Kathleen paints in a realistic painterly style, bringing the effect of changing light and color that describes the atmosphere, context and shape of the scene to the paper. Kathleen, for over 26 years has enjoyed the endless subjects that living in Boulder, Colorado, offers. Kathleen was formally trained at the Art Institute of Boston and at the Massachusetts College of Art, graduating from both schools with a BFA. For more information, visit [www.kathleenlanzoni.com](http://www.kathleenlanzoni.com).



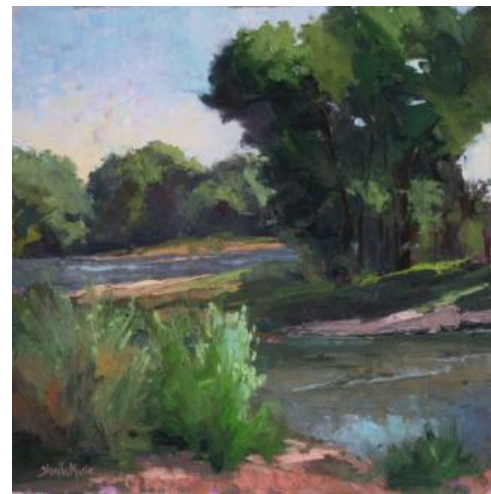
**Vincent Lewis** The goal of Vincent's work is to evoke a sense of serenity and provide moments of peaceful reflection from the natural world that so many people miss as they hurry through life. In his spare time, Vincent can be found traveling across the U.S. with his wife appreciating the beauty of God's creation - the subject of many of the themes seen in his work. Vincent resides in Denver, Colorado with his wife, Dianne and three beautiful adult children. His works are included in private collections across the U.S.



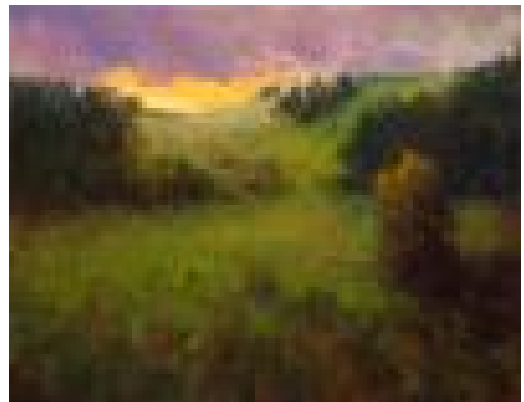
Painting landscape and wildlife has been **Janeice Linden's** passion for more than 20 years. She has participated in the Southeastern Wildlife Art Show, Natureworks Art Show and Out West Art Show, and her work has been featured at OPA Salon Show of Traditional Oils, OPA Western Regional Show, Society of Animal Artists Exhibition, American Miniatures and Small Works Great Wonders. Additionally, Janeice's paintings have been exhibited at Horizon Art Gallery, Settlers West, Wildhorse Gallery and the Beverly McNeil Gallery. For more information, visit [www.wildlifeinpastel.com](http://www.wildlifeinpastel.com).



**Sheila Littlehorn:** At the beginning of her career, Sheila owned a stained-glass studio, teaching, designing and creating commissions for custom home builders and individuals. After spending 25 years as the Director of Operations at a start-up company in which she developed, designed and patented baby products, Sheila returned to devoting herself full time to her fine art practices once again in 2014, this time working primarily in oil. Sheila's desire is to unite brilliant color, exciting brush strokes and thoughtful design to produce a work that reflects reality, but is clearly a painting. For more information, visit [www.sheilamariestudio.com](http://www.sheilamariestudio.com).



**Norbert Nagel** is an award-winning plein air artist. He currently teaches art for the City of Lakewood.



**Rodgers Naylor** is an award-winning oil painter based in Denver. He studied drawing at The Atelier in Minneapolis and painting at the Art Students League in Denver. His subjects include landscapes, urban scenes, figures and still life. He works en plein air, from life, and from reference photographs he has taken. He works both on his own ideas and on client commissions. Rodgers is a member of the Art Students League of Denver, Oil Painters of America, and Plein Air Artists Colorado. His work is represented by galleries in Kansas City, Michigan and Washington DC, and is found in collections worldwide. For more information, visit <http://RNaylorStudio.com>



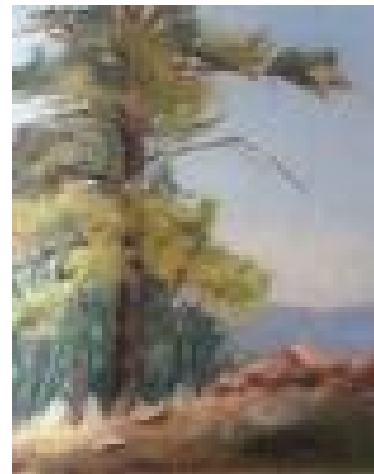
Mike Ray paints about half of his work on location, outdoors. He has received numerous national and international awards for his pastel painting work and is a Master signature member of the Pastel Society of Colorado. Born and raised in Colorado, most of Mike's subject matter comes from front range locations west and south of Denver. For more information, visit [www.mrray.faso.com](http://www.mrray.faso.com).



A fourth-generation Colorado native, born and raised in Jeffco, **Jennifer Riefenberg** has degrees in engineering and mathematics and is an award-winning plein air artist who feels most at home outside with nature and oil paint. She has been juried into national shows with her plein air paintings, including PAAC and WAOW, and has received several awards in area plein air competitions Best of Quick Draw in Meeker and others. Jennifer's work can currently be seen in exhibitions at the Framed Image in Denver and the Cherokee Ranch and Castle in Castle Rock. For more information, visit [www.artofsunshine.com](http://www.artofsunshine.com).



**Allana Ruby** is an artist living in Evergreen, Colorado. She primarily paints in oil and enjoys painting En Plein Air as well as still life in the studio.



**Beverly Thomas** has painted throughout her life and has taught in Rhode Island, as well as shown her work in both Rhode Island and Colorado. Beverly moved to Denver, CO in 2014. She begins most of her larger paintings as sketches, watercolors or small studies out in the field, as she prefers to take in the space, air and colors while working. For more information, visit [www.bevthomasonline.com](http://www.bevthomasonline.com).





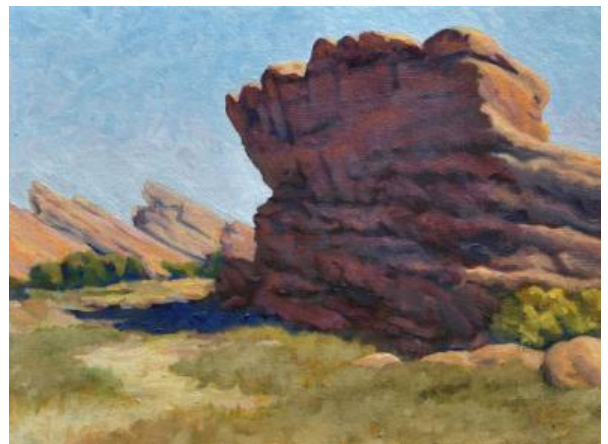
**Maria Tuttle** lives and works in Oakland, CA. A graduate of the Art Academy of Cincinnati, she is proudest of the solid foundation of technical training that she earned as an undergraduate. Maria has gone on to study literature, creative writing, political science, border studies, and peace and conflict, and she has been an educator, writer, and artist for more than 10 years. As a painter, the technical challenge of painting plein air in oils and watercolors continues to inspire her to explore and respond to the natural world. For more information, visit <http://www.mariaptuttle.com>.



Over the past 10 years, **Tom Ward** has painted a dozen large mural projects in the Denver metro area, and participated in many art exhibitions. A graduate of California College of the Arts, Tom's fine art has appeared in galleries including Abend, AUM, Wildflowers and Tri-Lakes Center For the Arts. Travel, and experiencing nature are what inspires his work the most. Tom feels fortunate to have received instruction, and feedback from many great artists including Quang Ho, Dave Santillanes, Ramon Kelley, Craig Pursley, and Lawrence Argent. For more information, visit [www.tomwardart.com](http://www.tomwardart.com).



**Betsy Johnson Welty** attended Occidental College, majoring in fine art, with a focus in painting, and opened her own studio in 1985. In recent years, Betsy has focused on her fine art, studying at the Art Students League of Denver, and has taken master classes with Kevin Weckbach. Welty paints both en plein air and in the studio, in watercolor and oil. Welty's paintings have appeared in many state and national juried art exhibitions. Her painting, "Observatory Nocturne," appeared on a commemorative poster for the 125th anniversary of Denver's University Park neighborhood. Her work can be seen at Framed Image Fine Art in Denver. For more information, visit [www.betsyjohnsonwelty.com](http://www.betsyjohnsonwelty.com).



**Jessica Wicken:** Although she received a Bachelors in Fine Art years before at the University of Utah, Jessica's full pursuit of painting began when she moved to Colorado in 1996 and was inspired by the surrounding beauty. Her work has been widely collected and is most noted for its sensitive and bold use of color. Jessica's favorite subjects include landscapes, quirky still life, and people and other creatures in the midst of life. For more information, visit [www.jessicawicken.com](http://www.jessicawicken.com).



**Lucy Yanagida** is an oil and pastel painter of landscapes and wildlife. A newer artist, Lucy has already garnered awards, as well as juried into select art shows and competitions around the state of Colorado. She has enjoyed and learned a tremendous amount from top painting instructors in the state. Lucy continues to enjoy the beautiful landscape and its treasured wildlife and wants to influence those around her to treasure it more themselves. For more information, visit [www.lucyyanagidaart.com](http://www.lucyyanagidaart.com).



## *Women conquering barriers*

### Bold Betties, Title Nine and Team Evergreen

How women can identify and reduce the traditional barriers to women's full participation in outdoor sports was the theme of "Celebrating Visionary Women," part of the Jeffco Conservation Summit Series.

The free, public conference was sponsored by Jeffco Open Space and PLAN Jeffco and held June 30 at the Boettcher Mansion near the Jeffco Nature Center on Lookout Mountain. The craftsman-style cottage and popular wedding venue was the perfect setting

The event included complimentary breakfast and lunch, speakers, a panel discussion and audience participation, concluding with an hour of yoga. Some 50 people, mostly women, listened to inspiring stories and shared their experiences facing the fears and obstacles involved in outdoor sports.

The speakers represented an element of the outdoor recreation industry that is attempting to become more sensitive to the needs of women to enable them to get more active.

Lise Aangeenbrug, executive director of the Outdoor Foundation, formerly of Great Outdoors Colorado, said the introduction of the iPhone in 2007, which led to a general increase in the amount of screen time, has caused an alarming decline in outdoor activity. Aangeenbrug cited a 2017 Yale study showing that 50 percent of people are active outside only once a year.



Lise Aangeenbrug - Jennifer Barbour

Niki Koubourlis, founder and CEO of Bold Betties, said one of the major obstacles women face is the popular marketing image that sports are for extreme athletes who like such things as hanging from rocks upside down.

Another obstacle is typically women are taught to be "neat, sweet and in their seats," Koubourlis said.

Based in Denver, Bold Betties connects women with a wide variety of outdoor adventures from horses to hiking and canoeing.

The membership-based company ([boldbetties.com](http://boldbetties.com)) helps connect women to about 200 activities or

## Women conquering barriers, continued



trips per month, across 36 cities, with the goal of expanding to 50 cities in a year. There are 40,000 members to date, according to the website. Outings are advertised through social media and designed to be supportive, safe, inclusive, uncritical and respectful, Koubourlis said. Operating principles include “no ridicule” and “no mean girls.”

Koubourlis described how she evolved from an unhappy, obese corporate over-achiever to a long-distance cyclist. She said her outdoor experiences gave her the confidence and the mental stamina to launch her own company.

Alexia O’Connor of Title Nine, a women’s apparel company, told the story of founder Missy Park, who started the firm in her garage with only 56 orders, 49 of which were from her friends.

This was in the days when women were still forced to wear men’s gym shorts and athletic shoes. “She had no idea how she was going to do it but she started anyway,” O’Connor said.

Title Nine aims to encourage women of all ability to get active by featuring “real women who all have day jobs” in their catalogs. Title Nine also sponsors a local hiking series called Summit Sisters for women who want to hike and do a 14er at the end. Starting Block is a grant program to help women start group activity programs for the young or disadvantaged.



Jennifer Barbour, executive director of Team Evergreen, a cycling club and organizer of the famous “Triple Bypass” bike race, which is held in mid-July, praised the virtues of persistence and determination for women interested in the outdoors.

She encouraged them to “ignore the governor,” referring to an inner voice that wants to impose irrational limits.

But she also said there is a time to stop. “You can say you don’t have to be there, if it’s not serving you. It’s OK to quit and move on.”

She advised getting comfortable with the idea of seeking assistance. “Drafting (or riding behind another cyclist to reduce wind resistance) can be a good thing. Use other people to help you if you can,” she said.

A concluding panel discussion gave the audience a chance to share stories about barriers to outdoor participation and how they coped with the challenges.

Visionary Women is the first of a series that will address visitorship, stewardship and enjoyment of our open space parks. Future topics will be announced.

## *A Hole in the Backdrop will be Closed*

The map on the brochure used by PLAN Jeffco for the 1972 campaign showed areas suitable for preservation. The map (see Figure 1) showed the entire backdrop, including the portion just south of the Boulder County line.



Figure 1

In 1996, Boulder, Douglas, El Paso, Jefferson, and Larimer Counties adopted the Front Range Mountain Backdrop Project. The Project identified most of the Mountain Backdrop as Critical Preservation Candidate Lands. A Project map (see Figure 2) shows a one to two mile wide section of the backdrop North of Highway 72 as Critical Preservation Candidate Land.

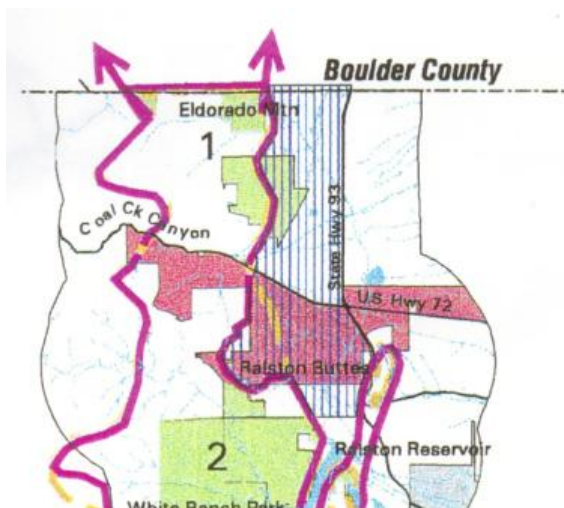
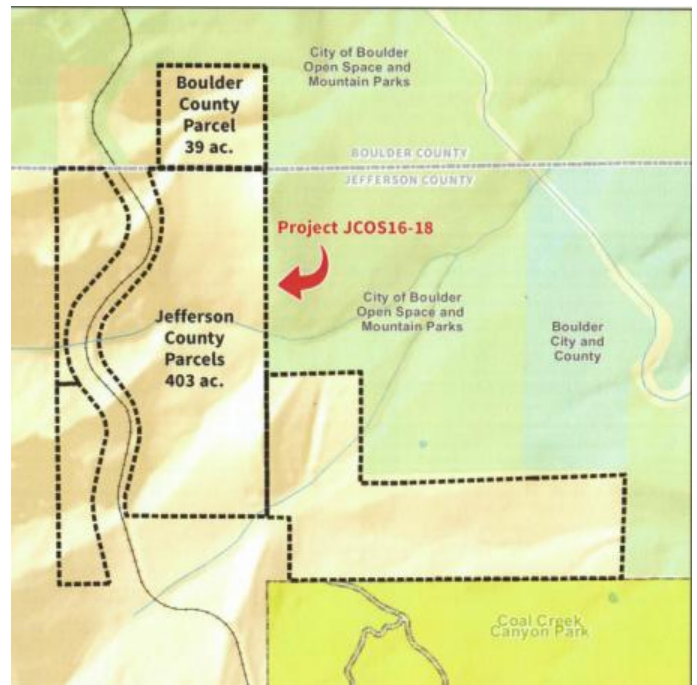


Figure 2

The five counties all began discussions with landowners of properties that were included in the Preservation Candidate areas. A number agreed to sell promptly, whereas others declined. But Open Space Departments are patient. Both the Jefferson County and Boulder City Departments had regular conversations with the declining land owners. Earlier this year, the City of Boulder Open Space & Mountain Parks (OSMP) successfully negotiated with Charles and Shirley Lippincott for the acquisition of their 442-acre property that straddles the County lines.



The Lippincott family has owned the property for more than 80 years. As the map shows, the property is bisected by the Moffat Tunnel Line of the Union Pacific Railroad. Over 400 acres of the property are in Jefferson County while only 39 acres are in Boulder County. In the 1950s a clay mine was operated on the property, but since then it only has been used for grazing. The property is accessed from Highway 72 via a stub from Plainview Road.

## *A Hole in the Backdrop will be Closed, continued*

The property has contiguity on three sides with the Coal Creek Canyon Study Area and OSMP land. When other contiguous properties are considered - Jeffco Open Space property, Boulder Open Space and Mountain Parks property and other local, state and federal public lands - the property is the center point of approximately 86,000 acres.

The property contains large areas of very high biodiversity including critical habitat and resources such as xeric tallgrass prairie and foothills ponderosa pine scrub woodland, as identified by the Colorado Natural Heritage

Program. It will provide public access for nature-based experiences and regional trail connections to OSMP, State Park trails, and trails to be developed in the Coal Creek Study Area.

Closing on the acquisition will be this fall, and for the next two or three years the property will be undergoing a thorough resource study by Jeffco Open Space and OSMP. Jeffco Open Space and OSMP will jointly create the development plan and manage the property. Look for the area to be available for public use in about five years.

## OSAC Notes OSAC Notes OSAC Notes

**June 7 - Study Session;** Field trip to North Table Mountain Park where a portion of the North Table Loop Trail North of the West Trailhead is subject to muddy conditions. The Trails Team has reconstructed portions of this “gets muddy” section with a number of test solutions. After a full fall and winter season, the solutions will be evaluated and the best potentially used to reconstruct portions of other trails that “get muddy.”

**Regular Meeting:** The Lippincott Property was presented by staff for acquisition approval. See separate article about the property. A resolution for acquisition of the property was approved.

Gina Barton gave the Committee a brief financial update. The sales tax income for 2018 is estimated at \$44.5 million. The major collector of sales tax is King Soopers (more than \$4 million in 2017) followed by Walmart, Xcel, Target, Home Depot, Costco, and Safeway.

**July 12 - Study Session** was preceded by a field trip to the Nature Center where the Natural Resources team demonstrated how they review natural resources on a property and how they

manage invasive weeds (bugs and sprays) and simulate ground fire in thinning forested lands (hand thinning and using a Masticator - a track-mounted self-feeding chipper that can handle moderately sized tree trunks and branches.)

Gina Barton reported on the potential budget for 2019. Staff are attempting to maintain a \$4 million balance at the end of 2019 and have budgeted \$1.9 million for acquisitions and \$5.8 million for capital items, primarily the Peaks to Plains Trail at the mouth of Clear Creek Canyon.

**Regular Meeting:** The Planning Team reported on their grant proposals. One is a \$150,000 GOCO grant with Boulder and Denver Mountain Parks to develop and install a unified signage system. Second is a small park grant from GOCO for redeveloping the entry to Beaver Ranch Park. JCOS is also applying for a Transportation Improvement Project Grant (TIP) to partially fund up to three miles of the Peaks to Plains Trail in the years 2021, 2022, and 2023.

Mary Ann Bonnell updated the Committee on the Rattlesnake research project on North Table Mountain. Of the 20 snakes fitted with

## OSAC Notes OSAC Notes continued

transmitters, 19 were located this spring to have the transmitters removed.

The Trails Team has produced a Trail Development Handbook and started a “proposed trail” process for new or modified trails. Proposals were accepted during the first part of this year. A total of 67 proposals were received - many requesting separated or directional trails. The proposals will be evaluated and the highest rated will get included in the 2019 trail plan.

**August 2 Study Session.** Lot Spot made a presentation on a system to be installed on six of the trailhead entrances to parks subject to the most parking overflow. Essentially, electronic cameras count the cars entering and leaving the trailhead and a computer keeps score of the available spaces. This information is available on a cell phone application. If a trailhead lot is full, the application will suggest alternate trailheads with available space.

### Regular Session

The first item was a presentation of a research project relating to the Cretaceous-Paleocene boundary as exposed on South Table Mountain. This boundary is the result of the giant meteor impact that resulted in the extinction of the dinosaurs and most other animal life. Open Space funds five research projects each year at the level of \$10,000 each. The rattlesnake study was done on one of these grants.

The details on the GOCO grant application for improvements to the Beaver Ranch entrance were presented. If the grant is approved the improvements will include moving the entrance to a spot with better sight distance, adding deceleration lanes to the road, paving the entry, building a paved parking lot, and adding a playground and picnic area with shelter. The existing zip line, picnic area, shelter and playground are being funded and will be maintained by the BRCI (Beaver Ranch Community Inc.).

Matt Robbins presented the draft survey that will be sent to 10,000 scientifically selected Jeffco residents in mid-August. OSAC members suggested a few minor modifications. A second version will be put online in mid-September to gather additional responses; anyone can participate in the online version of the survey.

Gina Barton updated the Committee on the changes to the Local Grants program this year. The total funds available are reduced significantly due to a commitment to Lakewood for assistance in the Taylor Property purchase.

An easement for Xcel to move a power pole on the Northeast corner of South Table Mountain Park was approved.

The draft budget was approved for submittal to the County Commissioners. The capital needed for operations was reduced by leasing two vehicles from fleet management rather than purchasing the vehicles.

Mike Foster reported that the Black Bear Trail from Deer Creek Park to Hildebrand Park is now open. The Trails Team finished the trail by building a section across a Lyons Sandstone cliff that the contractor said could not be built. Mike also said the initial interviews show 86% support for making the section of the Longhorn Trail biker only with 64% reporting an improved experience.

Matt Robbins said that staff experimented using Facebook Live to produce a 30 minute program relating to rattlesnakes. Three hours' notice of the program was given on Facebook and Twitter and there were an average of 12 viewers for the 30 minutes. Facebook estimated that 4800 also viewed part of the program during the following 24 hours. As a result we totaled 37 hours of viewing.

# If you have not!!! Join PLAN Jeffco or renew your Membership today!

PLAN Jeffco is the county-wide volunteer citizen’s group that organized and drafted the Open Space Resolution that resulted in the formation of the Jefferson County Open Space Program in 1972. We currently function as a watchdog group, observing meetings of the Open Space Advisory Committee, participating in subcommittees, and issues groups, proposing and working for important acquisitions, and keeping citizens informed of what is going on in their Open Space Program. PLAN Jeffco provided the leadership for the successful vote for bonds in 1998.

PLAN Jeffco works for open space and we work for you! Please sign up or renew your membership now! Your address label shows the date of your last renewal. Call 303.237.9493 for membership information.

**Our membership rate is:**

**\$35 per year**

Name: \_\_\_\_\_

Address: \_\_\_\_\_  
\_\_\_\_\_

Phone: \_\_\_\_\_

Email: \_\_\_\_\_

Make checks payable to PLAN Jeffco and send to:

PLAN Jeffco  
11010 W 29th Avenue  
Lakewood, CO 80215

## Are You wired??

If you are, PLAN Jeffco would like to have you on our email tree, so that we can inform you of special events and items that may be of concern to you. We will not share your email address without permission.

Please include with your dues payment or email to

[jklitz@comcast.net](mailto:jklitz@comcast.net)

Thanks





PLAN Jeffco  
11010 W 29th Avenue  
Lakewood, CO 80215

RETURN SERVICE REQUESTED

PRSRT STD  
U.S. POSTAGE  
**PAID**  
DENVER, CO  
PERMIT NO. 176

Email: [planjeffco@planjeffco.org](mailto:planjeffco@planjeffco.org)  
Check our website  
[www.planjeffco.org](http://www.planjeffco.org)

Jefferson County Citizens for  
Planned Growth with Open Space

# PLAN JEFFCO NEWSLETTER

